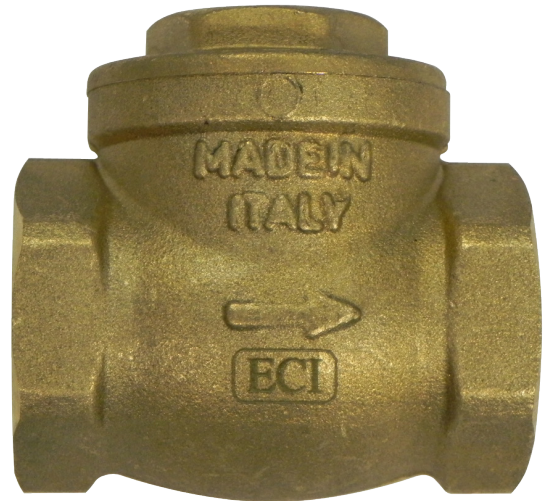
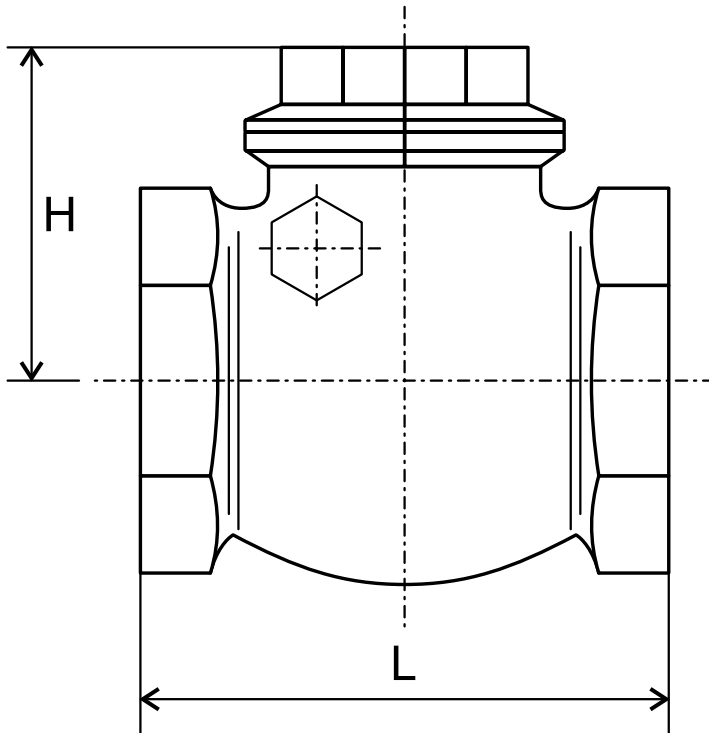


BS 302

BRASS CHECK VALVE
SWING TYPE

www.ecivalve.it

ECI EUROPEAN
CASTING
INDUSTRY



Dimensions (mm)

DN	SIZE INCH	L	H	F	B	Weight(KGS)
15	1/2"	47	51	8	15	0,16
20	3/4"	53	58	8	20	0,20
25	1"	63	68	10	25	0,35
32	1.1/4"	70	78	10	33	0,42
40	1.1/2"	88	98	10	37	0,76
50	2"	97	109	11	47	1,00
65	2.1/2"	120	130	16	55	1,65
80	3"	135	145	16	70	2,30
100	4"	162	180	20	90	5,10

Specifications:

- WORKING PRESSURE: PN 16
- WORKING TEMPERATURE: 0°C + 90°C
- METAL SEAT
- THREADING ACCORDING TO ISO 228/1
- SUITABLE FOR WATER, OIL & AIR

Materials

DESCRIPTION	MATERIAL
Body	CW 617N - UNI-EN 12165/98
Disc	CW 617N - UNI-EN 12165/98
Disc Gasket	NBR
Cap Gasket	Heat resisting fiber
Cap	CW 617N - UNI-EN 12165/98

ECI EUROPEAN
CASTING
INDUSTRY

All data, descriptions and pictures contained in this leaflet may be subject to change without prior notice.

European Casting Industry Srl | Via Lazzaretto, 11 | 20124 Milan MI, Italia | P.Iva: 03228761205 | www.ecivalve.it | info@ecivalve.it