

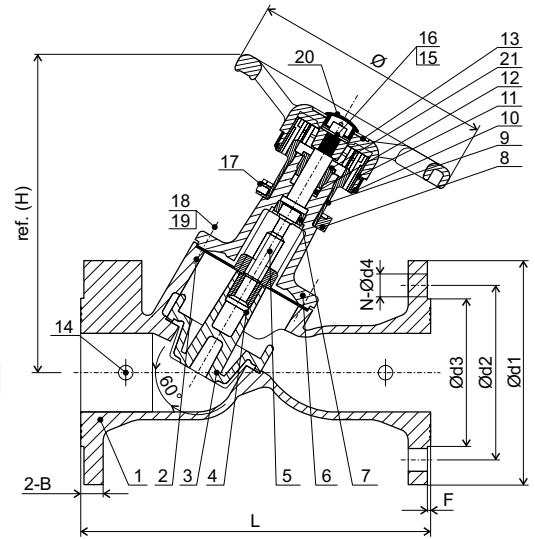
G 801

DUCTILE IRON BALANCING VALVE VARIABLE ORIFICE DOUBLE REGULATING VALVE (VODRV)

FLANGED TO CLASS 125 OR PN16
Conforms to BS 7350 PN16

www.ecivalve.it

ECI EUROPEAN
CASTING
INDUSTRY



Pressure / Temperature Ratings

TEMPERATURE (°C)	PRESSURE (BAR)
-10 to 120	16.0

Ratings align with BS EN 1092-2 PN16
(formerly BS 4504) or CL 125

Materials

	PART NAME	MATERIAL	BRITISH STANDARD
1	Body	Ductile Iron	EN-JS 1040/65-45-12
2	Seal Gasket	EPDM	EPDM
3	Disc	Brass	EN12165 CW617N
4	Stem Nut	Brass	EN12165 CW617N
5	Stem	Stainless Steel	From DN65-DN300 BS970 410S21 From DN350-DN500 BS970 431S29 DN600 SS630
6	Cover	Ductile Iron	EN-JS 1040
7	Stem Locking Bush	Brass	EN12165 CW617N
8	Limit Set of Indicator	Brass	From DN65-DN300 EN12165 CW617N+Galvanization
9	Oriented Set of Indicator	Stainless Steel	From DN350-DN600 BS970 304S15
10	Directed Circle	ABS	ABS
11	Indicator	ABS	ABS
12	Packing	PTFE+EPDM	PTFE+EPDM
13	Hand wheel	Ductile Iron	EN-JS 1040/65-45-12
14	Plug	Steel	Steel
15	Bolt	Stainless Steel	BS970 304S15
16	Big Gasket Hexagon	Stainless Steel	BS970 304S15
17	Socket Screws	Stainless Steel	BS970 304S15
18	Bolt	Stainless Steel	BS970 304S15
19	Spring Gasket	Stainless Steel	BS970 304S15
20	Indicator Dust Cover	ABS	ABS
21	Packing Gland	Brass	From DN65-DN150 EN12165 CW617N
		Ductile Iron	From DN200-DN600 EN-JS 1040/65-45-12

Specifications:

- Y PATTERN GLOBE VALVE SUPPLIED WITH TWO TEST POINTS
- PROVIDE FLOW MEASUREMENT & REGULATION
- TO BE USED FOR ISOLATING & TO BE REOPENED TO IT'S PRESET POSITION
- ACCURACY ± 5% ON ALL SETTING
- DESIGN & MANUFACTURE CONFORM TO BS 7350 PN16
- SUITABLE MEDIUM: WATER
- WORKING TEMPERATURE: T ≤ 120° C

Coefficients

DN	FLOW (Kv)	HEADLOSS (K)
65	104	5.32
80	116	6.48
100	213	13.15
125	333	8.32
150	476	7.33
200	768	8.26
250	1153	7.27
300	1743	8.36

*Fully open position.

Dimensions (mm)

DN	H	L	B	Ø	Ød1	Ød2	Ød3	N-Ød4	F
65	263	290	19	200	185	145	118	4-Ø 19	3
80	268	310	19	200	200	160	132	8-Ø 19	3
100	300	350	19	240	220	180	156	8-Ø 19	3
125	328	400	19	290	250	210	184	8-Ø 19	3
150	340	480	19	290	285	240	211	8-Ø 23	3
200	525	600	20	350	340	295	266	12-Ø 23	3
250	572	730	22	420	405	355	319	12-Ø 28	3
300	686	850	24.5	420	460	410	370	12-Ø 28	4
350	681	980	26.5	420	520	470	429	16-Ø 28	4
400	965	1100	28	640	580	525	480	16-Ø 31	4
450	972	1200	30	640	640	585	548	20-Ø 31	4
500	1065	1250	31.5	640	715	650	609	20-Ø 34	4
600	1180	1450	36	640	840	770	720	20-Ø 37	5

ECI EUROPEAN
CASTING
INDUSTRY

All data, descriptions and pictures contained in this leaflet may be subject to change without prior notice.

European Casting Industry Srl | Via Lazzaretto, 11 | 20124 Milan MI, Italia | P.Iva: 03228761205 | www.ecivalve.it | info@ecivalve.it