

G 507

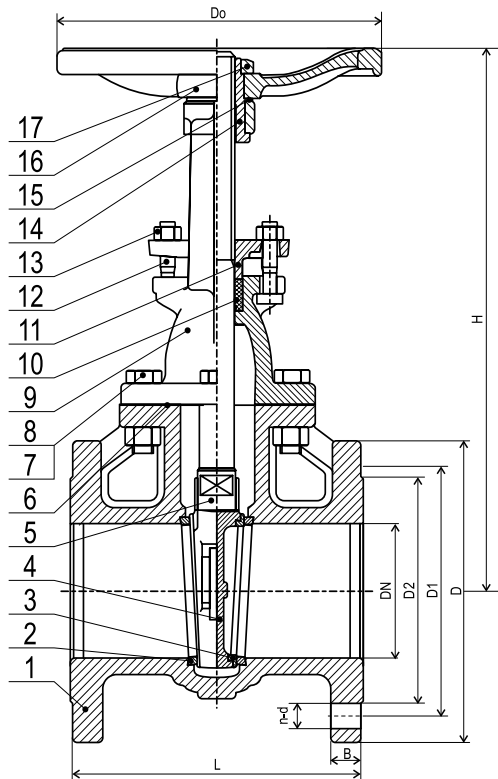
CAST IRON GATE VALVE

PN 16 FLANGED

RISING STEM

Conforms to BS EN 1171:2002 PN16

www.ecivalve.it



Specifications:

- OUTSIDE SCREW & YOKE
- PRESSURE-TEMPERATURE RATING: 16 BAR AT -10 TO 120°C 12.8 BAR AT 200°C
- TEST PRESSURES HYDRAULIC: SHELL: 24 BAR, SEAT: 17.6 BAR
- DESIGN AND MANUFACTURE CONFORM TO BS5150 (BS EN 1171:2002 PN 16)
- FACE TO FACE DIMENSIONS CONFORM TO SERIES 3 OF BS EN 558-1
- FLANGE DRILLED CONFORM TO BS EN 1092-2 PN 16
- GATE VALVES ARE DESIGNED TO BE IN AN OPEN OR CLOSED POSITION
- SUITABLE MEDIA: WATER & OIL

Dimensions (mm)

| DN | L | D | D1 | D2 | n-d | B | f | Do | H CLOSED | WEIGHT KGS |
|-----|-----|-----|-----|-----|-------|----|---|-----|-------------|---------------|
| 50 | 178 | 165 | 125 | 102 | 4-19 | 20 | 3 | 180 | 240 | 14.1 |
| 65 | 190 | 185 | 145 | 122 | 4-19 | 20 | 3 | 180 | 265 | 18.2 |
| 80 | 203 | 200 | 160 | 138 | 8-19 | 22 | 3 | 200 | 323 | 23.8 |
| 100 | 229 | 220 | 180 | 158 | 8-19 | 24 | 3 | 254 | 365 | 36.1 |
| 125 | 254 | 250 | 210 | 188 | 8-19 | 26 | 3 | 254 | 413 | 48.9 |
| 150 | 267 | 285 | 240 | 212 | 8-23 | 26 | 3 | 300 | 477 | 66.3 |
| 200 | 292 | 340 | 295 | 288 | 12-23 | 30 | 3 | 300 | 585 | 102 |
| 250 | 330 | 405 | 355 | 320 | 12-28 | 32 | 3 | 350 | 710 | 184 |
| 300 | 356 | 460 | 410 | 378 | 12-28 | 32 | 4 | 400 | 789 | 254 |

Materials

| No. | DESCRIPTION | MATERIAL | BRITISH STANDARD |
|-----|------------------|--------------|--------------------|
| 1 | Body | Cast Iron | 1561 EN JL 1030 |
| 2 | Seat Ring | Bronze | 1982 CC 491K |
| 3 | Wedge Seat Ring | Bronze | 1982 CC 491K |
| 4 | Wedge | Cast Iron | 1561 EN JL 1030 |
| 5 | Stem | Brass | 12164 CW603R |
| 6 | Gasket | Graphite | Non Asbestos |
| 7 | Bolt | Steel | Steel |
| 8 | Nut | Steel | Steel |
| 9 | Bonnet | Cast Iron | 1561 EN JL 1030 |
| 10 | Packing | Graphite | Non Asbestos |
| 11 | Gland Follower | Ductile Iron | ASTM A536 60-40-18 |
| 12 | Bolt | Steel | Steel |
| 13 | Nut | Steel | Steel |
| 14 | Stem Nut | Brass | Mn Brass |
| 15 | Handwheel Washer | Brass | Mn Brass |
| 16 | Handwheel | Cast Iron | EN JL 1030 |
| 17 | Handwheel Nut | Steel | Steel |



All data, descriptions and pictures contained in this leaflet may be subject to change without prior notice.

European Casting Industry Srl | Via Lazzaretto, 11 | 20124 Milan MI, Italia | P.Iva: 03228761205 | www.ecivalve.it | info@ecivalve.it