

# G 505

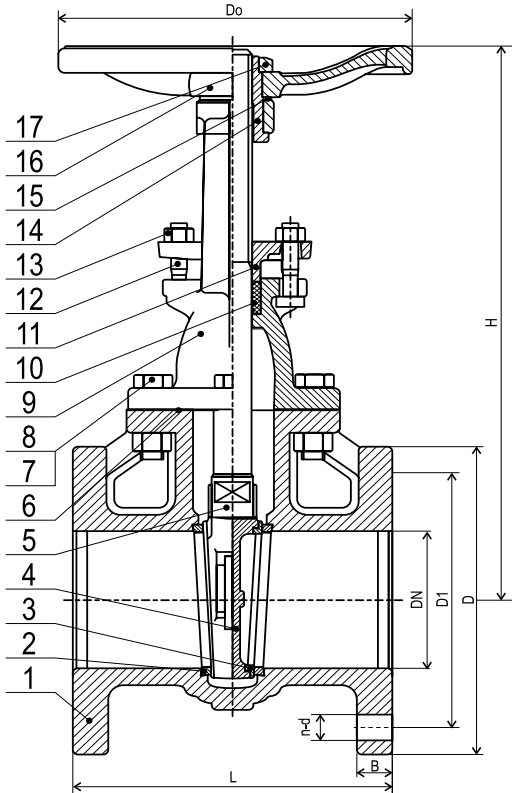
## CAST IRON GATE VALVE

ANSI CL 125 FLANGED

Rising stem

Conforms to MSS SP-70

www.ecivalve.it



### Specifications:

- OUTSIDE SCREW & YOKE
- 125 PSI/8.6 BAR FLUID PRESSURE TO 353°F/178°C
- 200 PSI/13.8 BAR NON-SHOCK COLD WORKING PRESSURE FROM -20°F TO 150°F/-29°C TO 66°C
- TEST PRESSURE SHELL 24.1 BAR & SEAT 13.8 BAR
- SUITABLE MEDIUM: WATER & OIL
- DESIGN AND MANUFACTURE CONFORM TO MSS SP-70
- FACE TO FACE DIMENSIONS CONFORM TO ANSI B16.10
- FLANGE DIMENSIONS CONFORM TO ANSI B16.1 CLASS 125
- GATE VALVES ARE DESIGNED TO BE IN AN OPEN OR CLOSED POSITION

### Materials

No.	DESCRIPTION	MATERIAL	AMERICAN STANDARD
1	Body	Cast iron	ASTM A 126 B
2	Body Seat Ring	Bronze	ASTM B 62
3	Wedge Seat Ring	Bronze	ASTM B 62
4	Wedge	Cast Iron	ASTM A 126 B
5	Stem	Brass	ASTM B 16
6	Gasket	Graphite	Non-Asbestos
7	Bolt	Steel	ASTM 307
8	Nut	Steel	ASTM 307
9	Bonnet	Cast Iron	ASTM A 126 B
10	Packing	Graphite	Non-Asbestos
11	Gland Follower	Ductile Iron	ASTM A536 60-40-18
12	Bolt	Steel	ASTM 307
13	Nut	Steel	ASTM 307
14	Stem Nut	Brass	ASTM B584 C884400
15	Handwheel Washer	Brass	ASTM B584 C884400
16	Handwheel	Cast Iron	ASTM A 126 B
17	Handwheel Nut	Steel	ASTM 307

### Dimensions (mm)

DN	SIZE INCH	L	D	D1	n-d	B	Do	H CLOSED	WEIGHT KG
50	2	178	152	121	4-19	15.9	180	258	13.1
65	2½	190	178	140	4-19	17.5	180	302	17.4
80	3	203	190	153	4-19	19.1	200	341	22.8
100	4	229	229	191	8-19	23.9	254	415	37.5
125	5	254	254	216	8-22	23.9	254	484	48.0
150	6	267	279	241	8-22	25.4	300	560	64.7
200	8	292	343	299	8-22	28.6	300	703	106.0
250	10	330	406	362	12-25	30.2	350	865	178.2
300	12	356	483	432	12-25	31.8	400	1028	266.9



All data, descriptions and pictures contained in this leaflet may be subject to change without prior notice.

European Casting Industry Srl | Via Lazzaretto, 11 | 20124 Milan MI, Italia | P.Iva: 03228761205 | www.ecivalve.it | info@ecivalve.it