

G 503

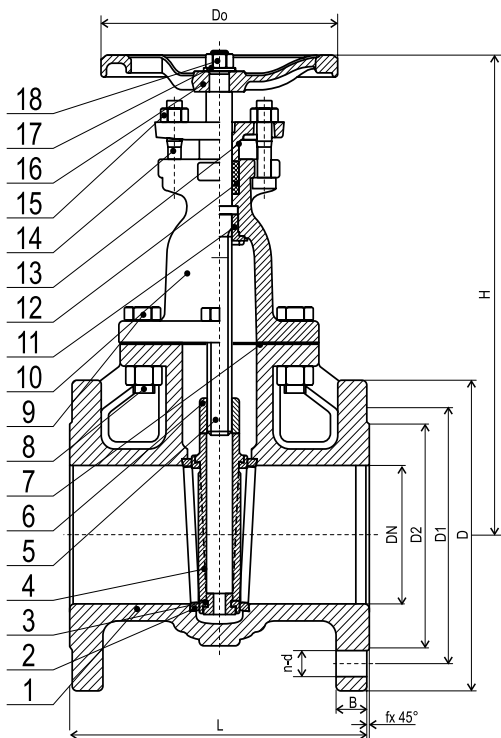
CAST IRON GATE VALVE

BS PN16 FLANGED

Non-Rising stem

Conforms to BS EN 1171:2002 PN16

www.ecivalve.it



Specifications:

- PRESSURE-TEMPERATURE RATING: 16 BAR AT -10 TO 120°C 12.8 BAR AT 200°C
- TEST PRESSURES HYDRAULIC: SHELL: 24 BAR, SEAT: 17.6 BAR
- DESIGN AND MANUFACTURE CONFORM TO BS5150 (BS EN 1171:2002 PN 16)
- FACE TO FACE DIMENSIONS CONFORM TO SERIES 3 OF BS EN 558-1
- FLANGE DRILLED CONFORM TO BS EN 1092-2 PN 16
- GATE VALVES ARE DESIGNED TO BE IN AN OPEN OR CLOSED POSITION
- SUITABLE MEDIA: WATER & OIL

Dimensions (mm)

DN	L	D	D1	D2	n-d	B	f	Do	H	WEIGHT KGS
50	178	165	125	102	4-19	20	3	180	240	13.5
65	190	185	145	122	4-19	20	3	180	265	16.7
80	203	200	160	138	8-19	22	3	200	323	23.3
100	229	220	180	158	8-19	24	3	254	365	35.9
125	254	250	210	188	8-19	26	3	254	413	48.5
150	267	285	240	212	8-23	26	3	300	477	66.5
200	292	340	295	288	12-23	30	3	300	585	102
250	330	405	355	320	12-28	32	3	350	710	174
300	356	460	410	378	12-28	32	4	400	789	230
350	381	520	470	429	16-28	36	4	560	987	420
400	406.4	580	525	480	16-31	38	4	560	1044	598
450	432	640	585	548	20-31	40	4	610	1148	733
500	457	715	650	609	20-34	42	4	610	1257	937
600	508	840	770	720	20-37	48	5	765	1418	1211

Materials

No.	DESCRIPTION	MATERIAL	BRITISH STANDARD
1	Body	Cast iron	1561 EN JL 1030
2	Body Seat Ring	Bronze	1982 CC 491K
3	Wedge Seat Ring	Bronze	1982 CC 491K
4	Wedge	Cast Iron	1561 EN JL 1030
5	Stem	Brass	12164 CW603R
6	Stem Nut	Brass	Mn Brass
7	Gasket	Graphite	Non Asbestos
8	Bolt	Steel	BS970 43A
9	Nut	Steel	BS970 43A
10	Bonnet	Cast Iron	1561 EN JL 1030
11	Bonnet Bush	Brass	Mn Brass
12	Packing	Graphite	Non Asbestos
13	Gland Follower	Ductile Iron	BS2789 Gr.420-12
14	Bolt	Steel	BS970 43A
15	Nut	Steel	BS970 43A
16	Handwheel	Cast Iron	1561 EN JL 1030
17	Handwheel Washer	Steel	BS970 43A
18	Handwheel Nut	Steel	BS970 43A



All data, descriptions and pictures contained in this leaflet may be subject to change without prior notice.

European Casting Industry Srl | Via Lazzaretto, 11 | 20124 Milan MI, Italia | P.Iva: 03228761205 | www.ecivalve.it | info@ecivalve.it