

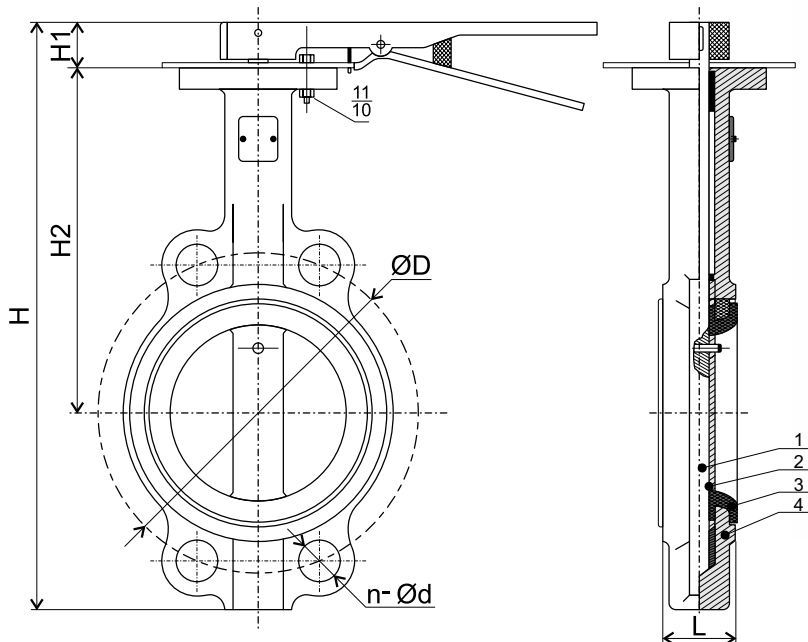
# G 101

## DUCTILE IRON BUTTERFLY VALVE WAFER SEMI-LUGGED TYPE WITH LEVER

Conforms to MSS SP-67 per art. 3 par. 3

www.ecivalve.it

ECI EUROPEAN  
CASTING  
INDUSTRY



### Specifications:

- WAFER SEMI-LUGGED TYPE BUTTERFLY VALVE WITH LEVER
- END CONNECTION SUITABLE FOR FLANGE CONNECTION ANSI B16.5 CLASS 150 OR PN16
- PRESSURE RATING 150 PSI
- DESIGNED & MANUFACTURED TO MEET MSS SP-67 STANDARD
- NOT SUITABLE FOR STEAM
- SUITABLE MEDIA: FRESH WATER, SEWAGE, SEA WATER, AIR, OIL, ACID & CORROSIVE MEDIA
- WORKING TEMPERATURE FROM -15 TO +120°C / -5°F TO +249°F

### Materials

No.	DESCRIPTION	MATERIAL	AMERICAN STANDARD
1	Body	Ductile Iron	ASTM A 536 65-45-12
2	Seat	EPDM	-
3	Disc	Stainless Steel	SS304/316
4	Shaft	Stainless Steel	SS410

### Dimensions (mm)

DN	H	H1	H2	Ød	n-Ød	BOLTS	L	WEIGHT KGS
50	273	32	161	121	4-Ø19	4 - 5/8" - 11UNC	42.0	2.50
65	296	32	175	140	4-Ø19	4 - 5/8" - 11UNC	45.0	3.10
80	308	32	181	153	4-Ø19	4 - 5/8" - 11UNC	44.5	3.70
100	346	32	200	191	4-Ø19	8 - 5/8" - 11UNC	51.0	5.20
125	372	32	213	216	4-Ø22	8 - 3/4" - 10UNC	54.5	6.50
150	397	32	226	242	4-Ø22	8 - 3/4" - 10UNC	54.8	8.50
200	480	40	260	299	4-Ø22	8 - 3/4" - 10UNC	59.6	14.00
250	545	50	295	362	4-Ø25	12 - 7/8" - 9UNC	67.0	21.00
300	634	55	310	432	4-Ø25	12 - 7/8" - 9UNC	75.9	32.00

ECI EUROPEAN  
CASTING  
INDUSTRY

All data, descriptions and pictures contained in this leaflet may be subject to change without prior notice.

European Casting Industry Srl | Via Lazzaretto, 11 | 20124 Milan MI, Italia | P.Iva: 03228761205 | www.ecivalve.it | info@ecivalve.it